



~ November 18, 2017



SOLID-GOLD DE GSUN DISCO-ET EX-91 (1st Jr 2-Yr-Old Eastern Nat'l 2015)

#76

SOLID-GOLD DE GSUN DISCO-ET

10K GTPI 80%R
SOLID-GOLD DE GSUN DISCO-ET +1558 G
 840003012171379 100%RHA-NA
 3-04 91 VEVEE 06/07/2013

PTA	-404M	-16F	-6P	80%R	8/2017
PTA	-165NM	+1.00%F	+1.02%P		
PTA	-2.6PL	3.02SCS	-2.6DPR	8.1%DCE	
PTA	+2.44T	+1.60UDC	+1.80FLC	81%R	8/2017
PTA	-32FE	-1.9FI	10.3%SCE		

K DOEBERIENER, L BOWEN,
 M HEATH & R LINGLE
 1766 N REEDSBURG RD
 WOOSTER OH 44691
 419-651-8961

3-03 365 25866 5.2% 1347 3.6% 920 (2nd lact.)

Fresh 10/25/17 @ 4-04, Milking 80#
 Selling OPEN

SHOW RECORD FOR Solid-Gold De Gsun Disco-ET

- 1st Jr 2-Yr-Old Eastern Nat'l 2015
- 1st Jr 2-Yr-Old Mid-East Summer Nat'l 2015
- Unanimous All-Am & All-Can Summer Yrlg 2014
- 1st Summer Yrlg & Jr Champ Royal 2014
- 1st Summer Yrlg WDE 2014
- 1st Summer Yrlg Southern Spring Nat'l 2014

HD GTPI 99%R
TOC-FARM GOLDSUN-ET +1445 G
 ITA 53990032335 100%RHA-NA
 01/14/2006

9K GTPI 83%R
SIEMERS ATW HAYAS-DIVA-ET +1751 G
 USA 70408155 100%RHA-NA
 5-01 88 EEVVV 06/05/2011

**	2-00	2	305	25170	100	4.2	1056	3.3	819	99X
			365	30220	100	4.1	1244	3.3	983	99
**	3-05	3	305	28010	99	3.9	1083	3.0	851	99
			329	29650	99	3.9	1143	3.1	910	99

2nd Dam: SIEMERS DUNDEE HAYA 9652-ET EX-92 GMD

- 2-06 2x 345d 38980 3.2 1245 3.2 1231
- 3-06 2x 365d 47200 3.6 1676 3.1 1449
- Jr All-American Fall Yearling 2008
- Nom. All-American Fall Yearling 2008
- 1st Fall Yearling Mid West National Show 2008
- 1st Fall Heifer Calf Mid West National Show 2007

3rd Dam: SIEMERS DURHAM HIA 6333-ET EX-91 DOM

- 2-01 4x 365d 46010 3.6 1649 3.0 1360
- 4-07 3x 365d 61146 3.7 2241 2.8 1705
- Several sons in AI

4th Dam: SIEMERS MANDEL HOPEFUL-ET EX-91 GMD DOM

- 3-01 3x 365d 53380 4.0 2148 3.2 1711

5th Dam: SIEMERS PRE T-HOPE-ET VG-89 GMD

- 4-02 3x 344d 30680 4.2 1297 3.3 1004

6th Dam: SIEMERS INSPIRATION TAMMIE EX-91 GMD DOM

- 5-00 2x 365d 34520 4.0 1398 3.2 1096

7th Dam: SIEMERS STARBUCK CADDIE VG-88 GMD DOM

- 3-02 2x 365d 29600 4.3 1283 3.5 1041

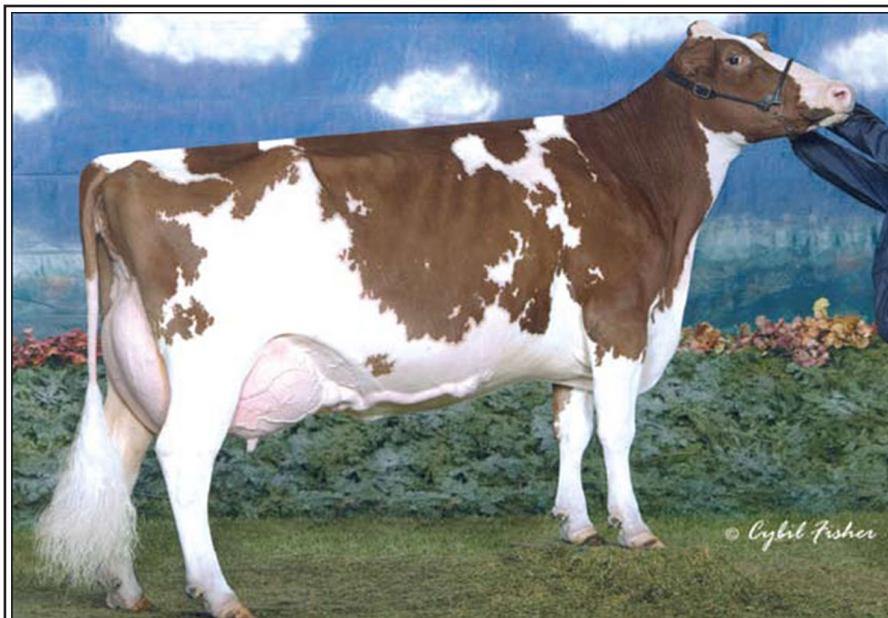
8th Dam: SIEMERS SHEIK CANDID VG-86 GMD DOM

- 5-07 2x 305d 27250 4.7 1268 3.5 953

2017 Ohio Holstein Fall Sale



~ November 18, 2017



#77 2nd Dam: DERRWYN MISS SPECIAL-RED-ET EX-94 4E DOM HINZ-BOS ABSOLT MEGA-RED-ET

HINZ-BOS ABSOLT MEGA-RED-ET CTPI 55%R
USA 72651726 100%RHA-NA +1691
2-06 81 +++G+ 12/10/2014

PTA -847M +21F -6P 55%R 8/2017
PTA -32NM +.20%F +.08%P
PTA -.6PL 3.25SCS -1.7DPR 10.5%DCE
PTA +1.88T +2.36UDC +1.28FLC 58%R 8/2017
PTA +15FE -2.4FI 10.9%SCE

2-03 2 190 15136 4.9% 746 3.1% 472 inc

Fresh 3/23/17 Milking 72.0# 5.2% 3.6% SCS 2
Due 5/10/18 to 7HO11596
SCIENTIFIC B DEFIANT-ET

APPLES ABSOLUTE-RED-ET 50K GTPI 98%R
USA 139358472 100%RHA-NA CV TC TL TY TD +1515 G
5-08 94 EEVE 09/04/2007

MER-GOLD ADVENT MS MEG-RED IMP GTPI 89%R
USA 135918319 100%RHA-NA +1573 G
6-03 92 EEVEE 06/05/2004

*	2-00	2	305	24000	94	4.7	1128	3.1	750	94
			365	27950	94	4.6	1286	3.2	886	94
**	4-02	2	305	23280	95	4.4	1014	3.4	787	95
			362	27330	95	4.4	1201	3.4	934	95
***	6-02	2	305	32180	94	4.9	1577	3.1	987	94X
			365	36940	94	4.8	1788	3.1	1149	94
	LIFE		1317	105420		4.6	4862	3.3	3438	

BRAD BOOTS
2557 STATE ROUTE 292
EAST LIBERTY, OH 43319-9401
937/666-5702

KHW KITE ADVENT-RED-ET 50K GTPI 99%R
USA 133002953 100%RHA-NA TV TL TD +1554 G
5-00 94 EEEE 12/02/2001

DERRWYN MISS SPECIAL-RED-ET IMP GTPI 90%R
USA 130870207 100%RHA-NA +1449 G
12-02 94 EEEEE 4E DOM 12/31/2000

***	2-02	2	305	22340	94	3.7	821	3.0	668	93
			365	25820	94	3.7	955	3.1	788	93
*	3-05	2	305	24280	93	3.5	854	3.1	752	93
**	5-02	2	305	37240	95	4.3	1591	2.9	1079	95
			365	43260	95	4.2	1834	3.0	1278	95
***	7-06	3	305	35730	94	4.3	1528	3.1	1102	94
	LIFE		1904	163440		4.0	6585	3.1	5087	

Res. All-American R&W Sr. 2-Year-Old 2003

All-American R&W Sr. 3-Year-Old 2004

All-American R&W 5-Year-Old 2006

All-American R&W 125,000lb. Cow 2008

2008 Holstein International Red Cow of the Year

3rd Dam: DERRWYN FACTOR MIATA-RED EX-94 2E
6-11 2 365 36900 4.2% 1560 2.8% 1049
LIFE: 1959 152150 4.2% 6417 3.1% 4703

• HM All-American R&W Aged Cow 2003

4th Dam: DERRWYN TT MISTIC VG-86
6-02 2 365 27200 3.9% 1068 2.8% 749
LIFE: 2119 140260 4.0% 5669 2.8% 3905

5th Dam: DERRWYN GOLD MISTRESS EX-91 2E
5-02 2 365 23540 3.4% 793 2.9% 683

6th Dam: DERRWYN MAGIC MISSY VG-88
4-06 2 305 19680 3.3% 644 2.8% 558

7th Dam: DERRWYN BOOTMAKER MISTY VG-85
LIFE: 2599 134650 3.4% 4609

8th Dam: DERRWYN HAGEN DAWN VG-88
LIFE: 3397 193260 3.6% 6874

9th Dam: WIN-DAY-WOOD HILLSIDE BEN EX-91 2E
LIFE: 3025 158770 3.6% 5728